

UNIT SIZE	MAX CFM	MAX L/S	IMPERIAL UNITS (Inches)								SI UNITS (mm)									
			INLET A	B	C	D	OUTLET		L	G	INLET A	B	C	D	OUTLET		L	G		
							E	F							E	F				
4	225	106	4							11 1/2	102						292			
5	350	165	5							11 1/2	127						292			
6	400	189	6	21	10	11	11 7/8	7 7/8	18	9 1/2	152	533	254	279	302	200	457	241		
7	550	259	7							9 1/2	178								251	241
8	750	354	8							9 1/2	203									
9	1000	472	9							9 1/2	229							241		
10	1300	613	10	25	12 1/2	13	13 3/8	12 3/8	20	9 1/2	251	635	318	330	352	314	508	241		
12	1900	896	12							29	15								15	15 7/8
14	2900	1368	14	40	17 1/2	20 1/8	19 7/8	17 3/8	40 3/8	4 3/8	356	1016	445	511	505	441	1026	111		
16	3500	1651	16	48	18	24 1/8	23 7/8	17 7/8	47 1/8	4 3/8	406	1219	457	613	606	454	1197	111		

**NOTES:**

- INTERNAL INSULATION - FIBERGLASS 3/4" (19mm) THICK, MIN. 1.5# DENSITY WHICH MEETS REQUIREMENTS OF NFPA 90A AND UL181
- 22 GA. ZINC COATED STEEL HOUSING. MECHANICALLY SEALED AND GASKETED, LEAK RESISTANT CONSTRUCTION
- MAXIMUM L/S (CFM) SETTINGS ARE FOR EITHER HOT OR COLD INLETS
- GAUGE TAPS ARE STANDARD
- PNEUMATIC ACTUATOR SUPPLIED & MOUNTED BY PRICE
- CLEAN, DRY, 20 PSI (138 KPa) CONTROL AIR REQUIRED
- TOTAL FLOW SENSOR TUBES EXIT ON HOT DECK SIDE
- SILENCER - MEDIUM PRESSURE STYLE, 22 GAUGE GALVANIZED CASING 26GA PERFORATED LINER OVER FIBERGLASS ACOUSTIC MEDIA
- PRODUCT TO BE SHIPPED ASSEMBLED WITH SILENCER FACTORY ATTACHED
- INTERNAL MIXING BAFFLE

**OPTIONS:**

- PNEUMATIC ACTUATOR SUPPLIED BY CONTROL CONTRACTOR & MOUNTED BY PRICE
- CONTROLLER COVER

**TERMINAL LINERS AND CONSTRUCTION OPTIONS:**

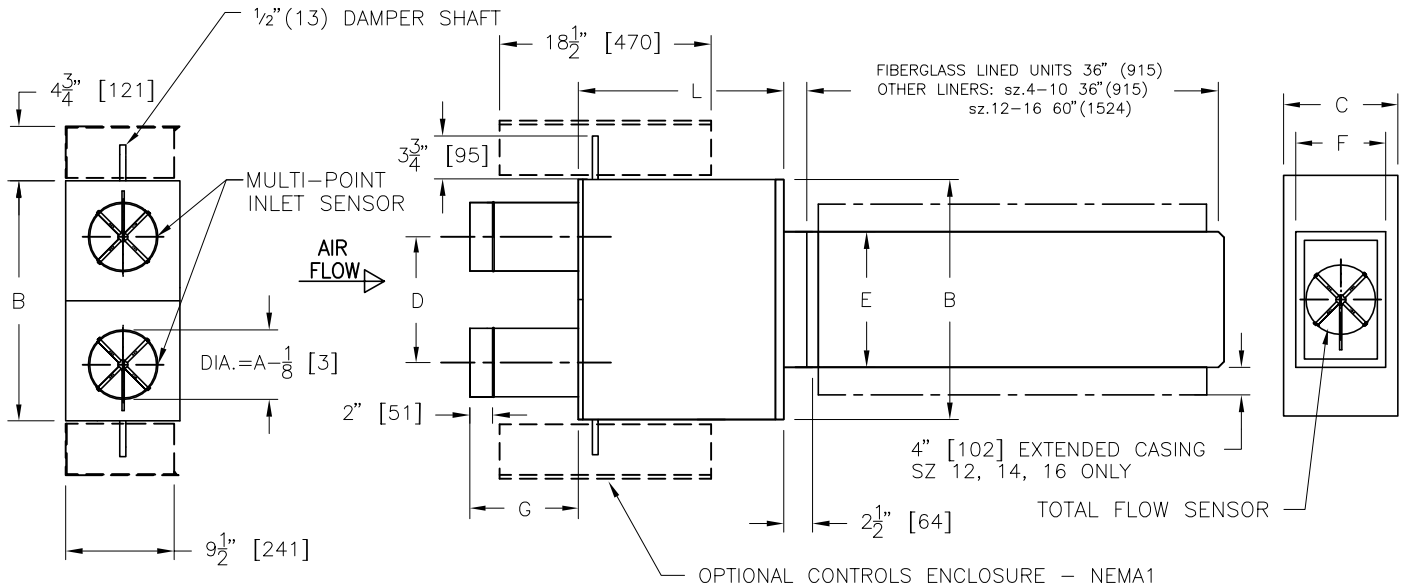
- 1" (25mm) FIBERGLASS (FG1)
- FF       CRWF       SM
- FF50     FB             PM
- CRAF     AFPM

**SILENCER LINERS:**

- PL - POLYMER LINER
- FC - FIBERGLASS CLOTH

ALL METRIC DIMENSIONS ( ) ARE SOFT CONVERTED. IMPERIAL DIMENSIONS ARE CONVERTED TO METRIC AND ROUNDED TO THE NEAREST MILLIMETER.

<b>PROJECT:</b>		<b>PRICE®</b>	
<b>ENGINEER:</b>		CH	<b>DPUQ8000</b>
<b>CUSTOMER:</b>			
<b>SUBMITTAL DATE:</b>	<b>SPEC. SYMBOL:</b>	2010/01/26	



UNIT SIZE	MAX CFM	MAX L/S	IMPERIAL UNITS (Inches)								SI UNITS (mm)							
			INLET A	B	C	OUTLET		L	G	INLET A	B	C	D	OUTLET		L	G	
						E	F							E	F			
4	225	106	4							11 1/2	102						292	
5	350	165	5							11 1/2	127						292	
6	400	189	6	21	10	11	11 7/8	7/8	18	9 1/2	152	533	254	279	302	200	457	241
7	550	259	7							9 1/2	178					251		241
8	750	354	8					9/8		9 1/2	203							241
9	1000	472	9							9 1/2	229							241
10	1300	613	10	25	12 1/2	13	13 7/8	12 3/8	20	9 1/2	251	635	318	330	352	314	508	241
12	1900	896	12	29	15	15	15 7/8	14 7/8	28	9 1/2	305	737	381	381	403	378	711	241
14	2900	1368	14	40	17 1/2	20 1/8	19 7/8	17 3/8	40 3/8	4 3/8	356	1016	445	511	505	441	1026	111
16	3500	1651	16	48	18	24 1/8	23 7/8	17 7/8	47 1/8	4 3/8	406	1219	457	613	606	454	1197	111

**NOTES:**

- INTERNAL INSULATION – FIBERGLASS 3/4" (19mm) THICK, MIN. 1.5# DENSITY WHICH MEETS REQUIREMENTS OF NFPA 90A AND UL181
- 22 GA. ZINC COATED STEEL HOUSING. MECHANICALLY SEALED AND GASKETED, LEAK RESISTANT CONSTRUCTION
- MAXIMUM L/S (CFM) SETTINGS ARE FOR EITHER HOT OR COLD INLETS
- TOTAL FLOW SENSOR TUBES EXIT ON HOT DECK SIDE
- DIGITAL CONTROLS BY CONTROL CONTRACTOR
- SILENCER – MEDIUM PRESSURE STYLE, 22 GAUGE GALVANIZED CASING 26GA PERFORATED LINER OVER FIBERGLASS ACOUSTIC MEDIA
- PRODUCT TO BE SHIPPED ASSEMBLED WITH SILENCER FACTORY ATTACHED
- INTERNAL MIXING BAFFLE

**OPTIONS:**

- CONTROLS ENCLOSURE
- DISCONNECT SWITCH
- GT – BRASS AIRFLOW SENSOR GAUGE TAPS

TERMINAL LINERS AND CONSTRUCTION OPTIONS:

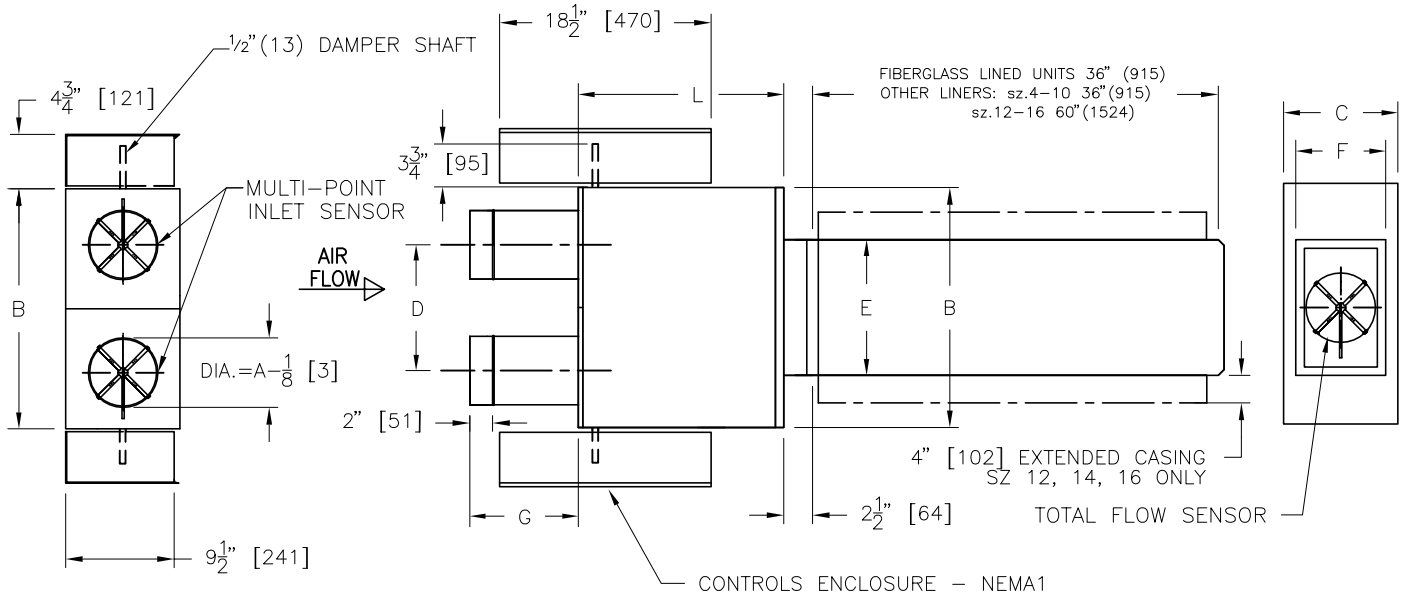
- 1" (25mm) FIBERGLASS
- FF       FF50       SM
- CRAF     AFPM       PM
- CRWF     FB

SILENCER LINERS:

- PL – POLYMER LINER
- FC – FIBERGLASS CLOTH

ALL METRIC DIMENSIONS ( ) ARE SOFT CONVERTED. IMPERIAL DIMENSIONS ARE CONVERTED TO METRIC AND ROUNDED TO THE NEAREST MILLIMETER.

<b>PROJECT:</b>		<b>PRICE®</b>	
<b>ENGINEER:</b>			
<b>CUSTOMER:</b>		254144	DUAL DUCT ULTRA QUIET CONSTANT & VARIABLE DIGITAL CONTROLS PRESSURE INDEPENDENT
<b>SUBMITTAL DATE:</b>	<b>SPEC. SYMBOL:</b>	2010/01/26	



UNIT SIZE	MAX CFM	MAX L/S	IMPERIAL UNITS (Inches)								SI UNITS (mm)							
			INLET A	B	C	OUTLET		L	G	INLET A	B	C	OUTLET		L	G		
						D	E						F	D			E	F
4	225	106	4							11 1/2	102					292		
5	350	165	5							11 1/2	127					292		
6	400	189	6	21	10	11	11 7/8		18	9 1/2	152	533	254	279	302	200	241	
7	550	259	7							9 1/2	178					251	241	
8	750	354	8							9 1/2	203						241	
9	1000	472	9							9 1/2	229						241	
10	1300	613	10	25	12 1/2	13	13 7/8	12 3/8	20	9 1/2	251	635	318	330	352	314	508	
12	1900	896	12	29	15	15	15 7/8	14 7/8	28	9 1/2	305	737	381	381	403	378	711	
14	2900	1368	14	40	17 1/2	20 1/8	19 7/8	17 3/8	40 3/8	4 3/8	356	1016	445	511	505	441	1026	
16	3500	1651	16	48	18	24 1/8	23 7/8	17 7/8	47 1/8	4 3/8	406	1219	457	613	606	454	1197	

**NOTES:**

- INTERNAL INSULATION – FIBERGLASS 3/4" (19mm) THICK, MIN. 1.5# DENSITY WHICH MEETS REQUIREMENTS OF NFPA 90A AND UL181
- 22 GA. ZINC COATED STEEL HOUSING. MECHANICALLY SEALED AND GASKETED, LEAK RESISTANT CONSTRUCTION
- MAXIMUM L/S (CFM) SETTINGS ARE FOR EITHER HOT OR COLD INLETS
- TOTAL FLOW SENSOR TUBES EXIT ON HOT DECK SIDE
- PRICE CONTROLS FACTORY MOUNTED
- PRICE THERMOSTAT FIELD MOUNTED
- SILENCER – MEDIUM PRESSURE STYLE, 22 GAUGE GALVANIZED CASING 26GA PERFORATED LINER OVER FIBERGLASS ACOUSTIC MEDIA
- PRODUCT TO BE SHIPPED ASSEMBLED WITH SILENCER FACTORY ATTACHED
- INTERNAL MIXING BAFFLE

**OPTIONS:**

- DISCONNECT SWITCH
- TERMINAL LINERS AND CONSTRUCTION OPTIONS:
- 1" (25mm) FIBERGLASS
- FF
- FF50       SM
- FB           PM
- CRAF       AFPM
- CRWF
- SILENCER LINERS:
- PL – POLYMER LINER
- FC – FIBERGLASS CLOTH

ALL METRIC DIMENSIONS ( ) ARE SOFT CONVERTED. IMPERIAL DIMENSIONS ARE CONVERTED TO METRIC AND ROUNDED TO THE NEAREST MILLIMETER.

<b>PROJECT:</b>		<b>PRICE®</b>	
<b>ENGINEER:</b>		GH	<b>DDUQ800</b> DUAL DUCT ULTRA QUIET CONSTANT & VARIABLE PRICE CONTROLS PRESSURE INDEPENDENT
<b>CUSTOMER:</b>		254145	
<b>SUBMITTAL DATE:</b>	<b>SPEC. SYMBOL:</b>	2010/01/27	